

# BITS & BYTES



WWW.SCPD-ComputerClub.org

November 2011 Volume XVI Number 11

## General Meeting - Nov. 22

### The Prez Sez...

Lynn Morse

Just taking one look at this issue of Bits and Bytes and you know Thanksgiving is right around the corner! Kudos to Jan Grenert for always finding the "just right" graphic to enhance the reading of our newsletter. I admit to turning the pages to see what she's used before reading the articles.

I'm an avid reader of Reader's Digest – I like the variety of short articles; usually I find one that has something to do with computer technology. In an old issue (3-11) I had overlooked, I found the following that applies to people like myself (and some of you), who lose track of time when online. So I'm quoting a couple of R.D.'s paragraphs, which were listed under the title grabber of "78% have stayed up past their bedtime because they're online:"

"A few handy websites can help you keep your eye on the clock. Productivity Meter, free downloadable software, is available at fruitful-time.com. You tag your favorite websites "productive" or "unproductive," and the program registers and grabs your time. Download the program onto a portable flash drive so you can track your usage on any computer."

Another interesting one is "slifelabs.com, which sits in the background of your screen, quietly watching your online activities.

Continued on Page 4

Welcome back one of our favorite General Meeting presenters:

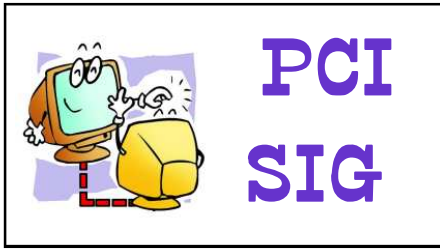
**Denise Welch of  
Computerworks, Inc.**

Denise will return once again to present her bag of digital holiday gift giving ideas including:

- **Iphone 4s**
- **Ipad**
- **Ipod nano watch**
- **Printers you can print to from anywhere in the world**
- **Bluetooth scratchpads and many more.**



The meeting is at 2:00 PM in Speakers Hall. Have your membership card ready and received your free raffle ticket.



Contributors:

Kent McDonald, Terry Kay  
and Arlene Faber

Eleven members attended the SIG to learn more about their PCs and the Internet.

Kent McDonald talked about new updates for Firefox and Chrome browsers. They seem to be coming more frequently (every 6 weeks) and often require an update to Adobe Flash Player also.

“Big Data,” company databases exceeding 10 Terabytes, are required to be analyzed quickly to provide management with real-time information regarding sales trends. Walmart was an early adopter of this technology. These large databases present challenges that demand powerful computers that may be accessed by managers in far-flung locations.



Twitter messages are being analyzed by hedge funds to get valuable trend information before it appears in the media. Twitter sent out messages to distant cities faster. After the last east coast earthquake, than the geologists could release their seismograph information to the public.

The iPhone 4s is not a 4G phone to the disappointment of many users. It does have a 1080p high definition video camera and a separate 8 megapixel still camera. It will operate on the Sprint network in

addition to Verizon and AT&T. It has amazing SIRI voice-command recognition capability and can take dictation. It will then send it as a text message to anyone you ask it to. There are a record-setting 1,000,000 preorders and it is not yet in the store.

The new \$199 Kindle Fire is a 7 inch color e-reader but does not have all the functions of tablet computers. It has no camera, operates on Wi-Fi only and uses the Android OS.

HP will perhaps discontinue the manufacture of computers. With the arrival of Meg Whitman as new CEO, they are already flip-flopping on the decision to spin off PC computer hardware the way IBM did.

Steve Jobs’ early computer called “NeXT” cost about \$10,000 and was not a successful product. However, the NeXT operating system is now used as the foundation of the Mac OS10 system. The 345 Apple stores have been very successful, unlike the Gateway retail stores. Steve Jobs’ authorized biography will be released soon.

Telkin is putting out a new PC computer aimed at the Senior market. It has a touch screen, very simple operation for neophytes, and will sell for about \$700 at Frys. It has a Linux OS and comes as an all-in-one model.

Amazon has agreed to start collecting sales tax on California sales. It should take effect in about a year. Kindle will have cloud memory so the device will not need large memory capacity.

Terry Kay suggested a round of introductions to start his segment.

Kent said he was advised by EarthLink to change his pass-

word to stop the spam going to folks in his address book. There are problems on the internet with bullying, viruses, malware, stalking, burglaries and stolen data. These problems are starting to occur on cell phones too. Facebook considers its users information to be a product they can sell to businesses.

Be sure to protect your computer, use strong passwords. Don’t post anything that can come back to bite you in a legal situation. A research company took unnamed photos from dating sites and was able to find a large percentage of the names using photos on Facebook.

We discussed some ways to create stronger passwords and how to keep track of them.

It is important to not use words found in the dictionary and helpful to use a combination of upper and lower case, numbers, letters and symbols.

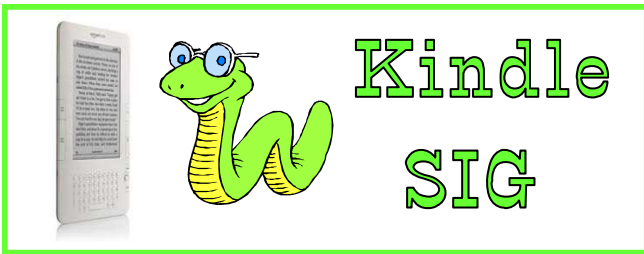
Jim Calvert showed the Dropbox account on the lab PCs. He can access it from Oregon or here and add or change files for his class handouts. Accounts are free up to 2 Gigabytes and can be found at [Dropbox.com](http://Dropbox.com).

Picasa has the option of sharing pictures on the internet.

Terry showed the Wiki site he has started to document the history of Sun City. Anyone can add to the site. It is open to all users as a cooperative site. Find it at [scpdwiki.wikispaces.com](http://scpdwiki.wikispaces.com).

Terry also explained the formation of the BRIC 2 group by the Association board.

**The next meeting of the SIG is on Tuesday, November 8 in the lab.**



By Sharon Kiel

At the October SIG, Sharon Kiel suggested some keyboard shortcuts. For example: to turn on the “Text to Speech” feature, hold down the ^ (up arrow) key and the Sym key down at the same time. To start your music playing in the background, you just hold down the Alt key and the Space Bar at the same time.

She demonstrated how to put this music into the Kindle. First you select two or three MP3 songs from your computer music library. Place these MP3 files on the computer desktop (to locate easily). Now attach your Kindle to your computer and open your Computer icon, and then open the Kindle folder. Drag and Drop your music files from your desktop into the Music Folder. Now you have music to enjoy while reading. When you disconnect your Kindle from your computer, you will be able to use the above shortcut to start your music (or stop).

There was some discussion on the many new versions of Kindles now available. Older versions should have the latest update version installed. To check what version you are using, push your Menu key and select Settings. The version number will be at the very bottom. It should be Version 3.3. If it is not, then go to Amazon.com select Manage My Account, and download the latest update.

**TIP OF THE MONTH:** Why buy books? The Kindle can now read Public Library E-Books. With your library card, you can now check out a Riverside County library e-book. It will disappear in two weeks. Go on Amazon.com to learn more, or to the Riverside County website [www.rivlib.net](http://www.rivlib.net)

**The next Kindle SIG will be held November 15 at 7:00 pm in the computer lab.**



By Len Heller

The Mac SIG meeting opened promptly at 9:00 AM to an almost full house. This was the moment we had been waiting for, Shirley Allan’s introduction to the new LION OS. This was a real opportunity to get first hand information on pros and cons of the new system.

If an Apple Rep were giving it, he would give you all the “wonderful” new features of Lion. Shirley was able to give us a “reality” assessment of many of the new features.

(“Enhancement” is a word that always scares me). Shirley took us through new many terms: Mission Control, Dashboard, Gestures, etc. and gave brief explanations of their newer functions and capabilities. There are differences, and she touched upon how and where their functions were familiar and where they abruptly changed, and/or enhanced the original functions. There are many new features that will take some getting used to, but like all the previous Operating Systems, once you get on to them. they function nicely.

Shirley has discovered many ways to “bypass” some of these new enhancements, (if you do not care for them), but this will have to wait till she gets her new classes lined up. She will start her “Introduction to LION” series on November 2, 8, and 9.

Beginning Lion classes will be November 15 and 16. Address Book on November 29 and Mail Preferences on November 30. all in Lion as they too differ greatly.

In response to the many queries regarding compatibility of programs you may be using presently, your best bet is to go to: [roaringapps.com/apps:table](http://roaringapps.com/apps:table). At the top of that page you will see an alphabet. If you have “Photoshop”, click on the “p” to find Photoshop, which will tell you Yes, No or Maybe.

**The next MAC SIG will be on November 18 at 9:00 in the computer lab.**

# The Print Shop Class for November

By Arlene Faber



Stickers and business card formats allow us to make a lot of other things you might not think of right away.

This time of year you can use the business card format to make gift tags for your holiday gifts.

I like to use it for making an emergency wallet health card with allergies, medications, conditions, and other health information. You can tuck in a suitcase, wallet, backpack, evacuation kit or p u r s e .

Stickers can be decorated for holiday mail or to make price tags for merchandise to sell at the craft fair.

Maybe round stickers can be seals for the backs of envelopes.

Stickers can be as large as a 1/4 sheet or full sheet for mailing labels for packages. Learn the tools to use to make this happen for your projects.

**Class is on Monday, November 14 at 1 PM.  
The sign-up sheet is in book #4.**

## The Prez Sez...

(Continued from page 1)

You can restrict your time in particular areas such as news, email and games.”

If you're looking for useful (and sometimes unique) gifts, then you'll be delighted to read that Denise Welch will be back this month with her annual “gadgets and things” that you may find yourself wanting to buy for yourself or as gifts.

**Happy Thanksgiving  
to  
One and All**

# Word Classes in November

By Jan Grenert

Let's enjoy the November festivities, but think ahead to the December holidays. Many of us send holiday greeting letters (plain or snazzy) to friends and family and use mailing labels (also plain or snazzy).

Even if you are not prone to such flamboyance, you may want to learn how to create a letter and then use Word's Mail Merge process to produce individualize letter to each person on a mailing list. Ditto with mailing labels.

The **Mail Merge Letter** lesson is on November 10 at 3:00 p.m. This is what you will learn:

- How to create a main letter . We will even throw in a special holiday offering on how-to add images to the letter. You know the kind - with pictures of People, Fido, Fluffy and Fish.

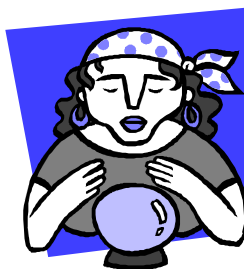


- Then merge that holiday-hello letter with a list of names and addresses.
- Zingo, a set of letters where each is individually addressed to a person on the list.

The **Label Merge** lesson is on November 17 at 3:00 p.m. This is what you will learn:

- Mail merge using purchased, pre-decorated labels to a list of addresses.
- Mail merge using plain labels that you have decorated yourself. (This is a two step process)

These classes are not for beginners. You must be familiar with using Word, the keyboard and mouse.



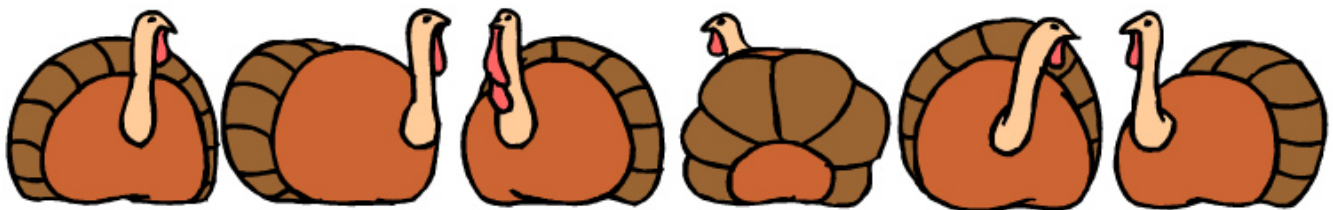
Looking into our digital Chrystal Ball with Ogb and the BaZinga OS, we can see your future.

December will be lucky for those of you who want to take the LibreOffice Text Document Classes.

**Classes 1 & 2 will be on Dec 8 at 3:00  
Class 3 & 4 on Dec 15 at 3:00**

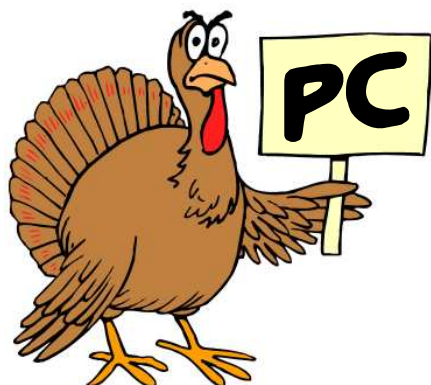
# November Schedule of Classes

<u>DAY</u>	<u>DATE</u>	<u>TIME</u>	<u>CLASS</u>	<u>OS</u>	<u>Book</u>	<u>TEACHER</u>
Tues	Nov 1	1 – 2:30	PC for Beginners (1/3)(Session 1)	PC	3	Jim Calvert
Wed	Nov 2	1 – 2:30	Intro. To Lion (1/3)	Mac	1	Shirley Allan
Thur	Nov 3	1 – 2:30	PC for Beginners (2/3)(Session 1)	PC	3	Jim Calvert
Fri	Nov 4	1 – 2:30	Windows 7: Beyond Basics	PV	3	Jim Calvert
Sat	Nov 5		<b>Open Lab 10:00 to Noon</b>			
Mon	Nov 7	1 – 2:30	PC for Beginners (3/3)(Session 1)	PC	3	Jim Calvert
Tues	Nov 8	1 – 2:30	Intro. To Lion (2/3)	Mac	1	Shirley Allan
		7:00	<b>PCI SIG</b>			LAB
Wed.	Nov 9	1 – 2:30	Intro. To Lion (3/3)	Mac	1	Shirley Allan
Thur	Nov 10	3 – 4:30	Word Adv. Mail merge		2	Jan Grenert
Fri	Nov 11	3:00	Photoshop: Picture Manipulation	PC/Mac	1	Alan Gamble
Sat	Nov 12	10 – 12	Open Lab 10:00 to Noon			
Mon	Nov 14	1 – 2:30	PrintShop: Labels & Business Cards	PC	4	Arlene Faber
Tues	Nov 15	1 – 2:50	Beginning Mac (Lion) (1/2)	Mac	1	Shirley Allan
		3 – 4:30	Beginning Quicken	Mac	8	Dave Rosenthal
		7:00	<b>Kindle SIG</b>			Lab
Wed	Nov 16	1 – 2:50	Beginning Mac (Lion) (2/2)	Mac	1	Shirley Allan
Thur	Nov 17	8 - 10	Picasa/Muvec	PC	15	Bob Osborn
		9:00	<b>Board Meeting</b>			Idyllwild
		1:00	Intro. To Firefox	PC/Mac	7	Al Sabsevitz
		3 – 4:30	Word Holiday Labels & Merge	PC	2	Jan Grenert
Fri	Nov 18	9:00	<b>Mac SIG</b>			Lab
		2 – 3:30	Beginning Quicken	PC	8	Dave Rosenthal
Sat	Nov 19		Open Lab 10:00 to Noon			
Mon	Nov 21	9:00	Passwords	PC/Mac	15	Chuck Hellman
Tues	Nov 22	2:00	General Meeting			Speaker's Hall
Wed	Nov 23	1 – 2:30	Address Book (Lion)	Mac	1	Shirley Allan
Thur	Nov 24-27		<b>Happy Thanksgiving ( Lab Closed)</b>			
Tues	Nov 29	8:30 -10	Photoshop Elements: Making Selections	PC	14	Jim Calvert
		1 – 2:30	Mail Set Up (Lion)	Mac	1	Shirley Allan
Wed	Nov 30	1 – 2:50	Mail Preferences (Lion)	Mac	1	Shirley Allan



THE LAB IS CLOSED NOVEMBER 24-27

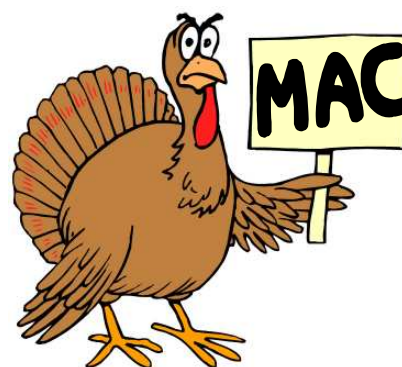
# November Classes Listed by OS



<u>CLASS</u>	<u>DATE</u>	<u>TIME</u>
<u>PC for Beginners (Session 1)</u>		
(1/3)	Nov 1 .....	1:00
(2/3)	Nov 3 .....	1:00
(3/3)	Nov 7 .....	1:00
Firefox - Introduction	Nov 17 .....	1:00
Passwords	Nov 21 .....	9:00
Photoshop: Picture Manipulation	Nov 11 .....	3:00
Photoshop Elements: Making Selections	Nov 29 .....	8:30
Picasa/Muvey	Nov 17 .....	8:00
PrintShop: Labels & Business Cards	Nov 14 .....	1:00
Quicken - Beginning	Nov 18 .....	2:00
Windows 7: Beyond Basics	Nov 4 .....	1:00
<u>Word Advanced</u>		
Letter Mail Merge	Nov 10 .....	3:00
Holiday Labels & Merge	Nov 17 .....	3:00

## Thanks to Mac and PC Teachers

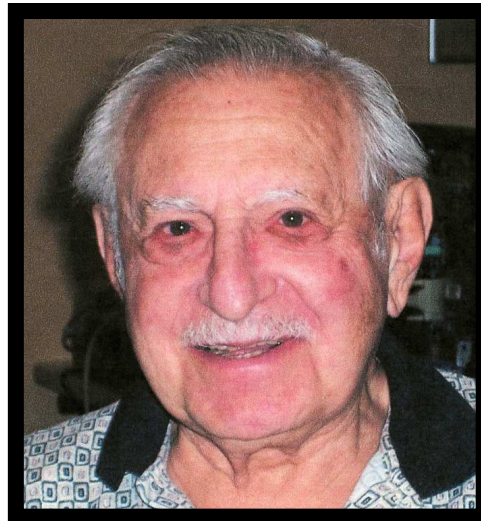
<u>CLASS</u>	<u>DATE</u>	<u>TIME</u>
<u>Introduction To Lion OS</u>		
(1/3)	Nov 2 .....	1:00
(2/3)	Nov 8 .....	1 00
(3/3)	Nov 9 .....	1:00
<u>Beginning Mac (Lion)</u>		
(1/2)	Nov 15 .....	1:00
(2/2)	Nov 16 .....	1:00
Address Book (Lion)	Nov 23 .....	1:00
Mail Set Up (Lion)	Nov 29 .....	1:00
Mail Preferences (Lion)	Nov 30 .....	1:00
Firefox- Introduction	Nov 17 .....	1:00
Passwords	Nov 21 .....	9:00
Photoshop: Picture Manipulation	Nov 11 .....	3:00
Quicken - Beginning	Nov 15 .....	3:00



## November Monitor and Open Lab Schedule

DATE	DAY	10-12	12-12:50
Nov. 1	Tues	H. Cook	H. Cook
Nov.2	Wed	C. Voelker	Pending...
Nov.3	Thu	B. Osborn	N. Alpert
Nov.4	Fri	J. Manion	S. Shiffman
Nov.5	Sat	L. Rowe	CLOSED
Nov.7	Mon	C. Chu	B. Crowley
Nov.8	Tue	H. Cook	S. Livran
Nov.9	Wed	C. Voelker	B. Tagliarno
Nov.10	Thu	B. Osborn	N. Alpert
Nov.11	Fri	J. Manion	S. Shiffman
Nov.12	Sat	L. Rowe	CLOSED
Nov.14	Mon	C. Chu	B. Crowley
Nov.15	Tue	H. Cook	H. Cook
Nov.16	Wed	C. Voelker	B. Tagliarno
Nov.17	Thu	B. Osborn	N. Alpert
Nov.18	Fri	J. Manion	S. Shiffman
Nov.19	Sat	L. Rowe	CLOSED
Nov.21	Mon	C. Chu	B. Crowley
Nov.22	Tue	H. Cook	H. Cook
Nov.23	Wed	C. Voelker	Pending...
Nov.24	Thu		
Nov.25	Fri		
Nov.26	Sat		
Nov.28	Mon	C. Chu	B. Crowley
Nov.29	Tue	H. Cook	H. Cook
Nov.30	Wed	C. Voelker	Pending...

# In Memory of



# David Feign

David passed away on  
October 19, 2011

He was a dedicated Monitor  
and club member who gave the  
gift of his time to help others.

We are all grateful to have  
known David  
Rest In Peace



# November General Club Information Meeting Schedule



PCI SIG .....	Nov. 8.....	7:00 PM
KINDLE SIG .....	Nov. 15.....	7:00 PM
BOARD MEETING.....	Nov. 17.....	9:00 AM
MAC SIG .....	Nov. 18.....	9:00 AM
GENERAL MEETING .....	Nov. 22.....	2:00 PM



## We Salute Our Veterans

### "Let's Compute" Officers 2011-2012

Lyn Morse, President .....	760-345-4466.....	lynmorse@aol.com
Shelia Harbet, VP Education .....	760-360-7146.....	shelia@csun.edu
Jan Grenert, Secretary, Newsletter Editor .....	760-360-9085.....	jpgrenert@dc.rr.com
Kent McDonald, Director of Communications.....	760-345-2931.....	rkmcdonald@earthlink.net
Linda Espinoza, Treasurer.....	760-200-9299.....	puananioi@aol.com
Barbara Kaye, Director of Maintenance.....	760-772-6520.....	barbarak1775@aol.com
Jerry Katler, Director of Programs.....	760-772-6405.....	fishfoto@me.com

#### Committee Chairs

Finance Review Committee .....	Betsy Lewis
Computer Sale.....	Open
Nominating Committee.....	Open
News & View Writer .....	Yvonne Michelsen

#### Volunteer Coordinators

##### Call to volunteer:

35 MM Scanner Coordinator	George Hans .....	345-3875
General Meeting Volunteers	Jean Ferrull .....	200-1165
Supplies	Sharon Kiel.....	772-0745
Monitor Coordinator	Moe Sullivan.....	772-4416
	Email:modwenas@hotmail.com	

#### November Teachers

Shirley Allan.....	760-345-5087
Jim Calvert .....	503-828-8815
Arlene Faber .....	760-200-3933
Alan Gamble.....	760-469-5650
Jan Grenert .....	760-360-9085
Shelia Harbet .....	760-360-7146
Chuck Hellman .....	760-861-2174
Bob Osborn.....	760-200-1149
David Rosenthal.....	760-772-7029
Al Sabsevitz.....	760-772-3025

#### November Lab Monitors

John Hicks	Sara Shiffman
Sandy Livran	Barbara Tagliamo
John Manion	Charley Voelker
Leonette Rowe	

#### 35 MM Scanner Monitor

George Hans



Publication of the SCPD  
"Let's Compute" Computer Club  
Address Correspondence to:  
Bits & Bytes  
38180 Del Webb Blvd.  
Palm Desert, CA 92211

**Bits & Bytes** is distributed to current members of the SCPD "Let's Compute" Computer Club, which provides this publication for informational purposes only. The club neither endorses nor promotes any of the products or services that have been mentioned or suggested herein, or at any meeting, and assumes no responsibility or liability